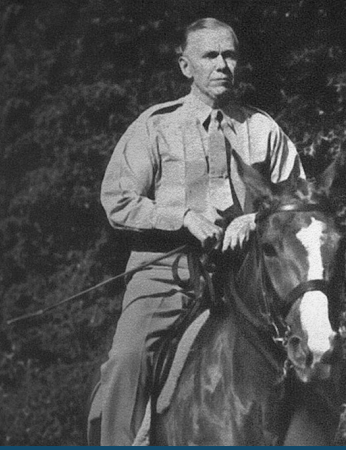


GEORGE C. MARSHALL

American Visionary



TRANSFORMATIONAL LEADER

ORGANIZER OF VICTORY

GLOBAL STATESMAN

- U.S. Army Chief of Staff
- Special Envoy to China
- Secretary of State
- President of the American Red Cross
- Secretary of Defense
- Architect of the Marshall Plan
- Nobel Peace Prize Recipient

ANNUAL MEMBERSHIP LEVELS

First Captain: \$100

- Invitation and free attendance at special monthly member speaker events
- 2 Guest Passes to George C. Marshall's Dodona Manor

General's Staff: \$250

- All First Captain benefits, plus
- Choice of George C. Marshall Oak Memorabilia Letter Opener or Pen

ANNUAL LEADERSHIP LEVELS

Oracle of Dodona: \$1,000

- All General's Staff benefits, plus
- Signed copy of *Marshall, a Statesman Shaped by the Crucible of War*
- Invitation to annual benefactors formal evening event

1941 Society: \$1,941

- All Oracle of Dodona benefits, plus
- 1941 Society Commemorative Medal
- Invitation to summer garden party for members of the 1941 Society

Statesman: \$5,000

- All 1941 Society benefits, plus
- Exclusive access to host a private dinner for up to 10 people in General Marshall's Dining Room at Dodona Manor

Marshall Legacy Trust: \$10,000*

- All Statesman benefits, plus
- Recognition as a member of the Marshall Legacy Trust on perpetual display in the Haub Exhibit Room at Dodona Manor

*Each year the GCMIC Board will direct a percentage of all gifts at this level (10-20%) to build the permanent endowment for the Marshall Center.

[CLICK HERE](#) TO BECOME A MEMBER